

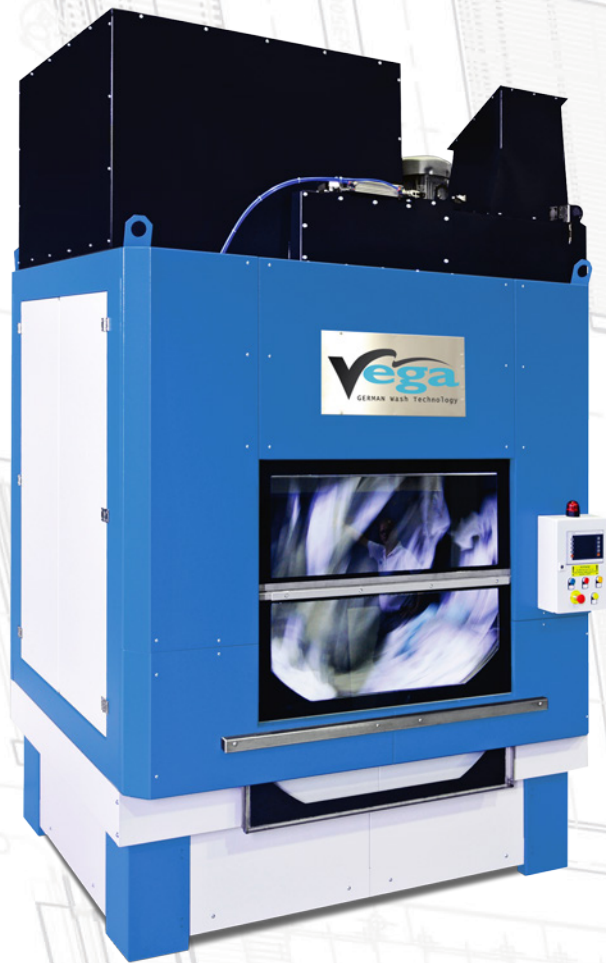


SmartDry
HT

VEGA STANDALONE DRYERS

Features:

- Premium Dryer
- High efficiency
- Unique burner concept
- Loading & Unloading at the front of the dryer



GERMAN WASH TECHNOLOGY
ENGINEERING YOUR FUTURE

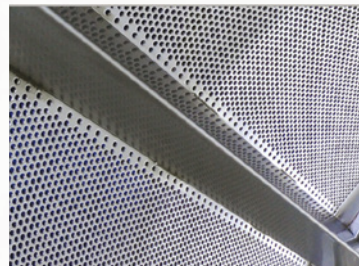
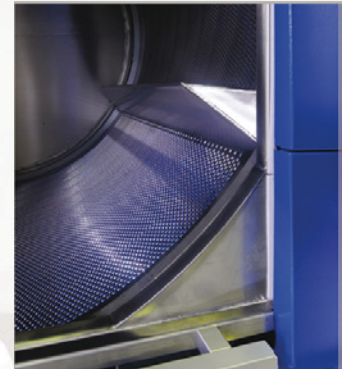
RELIABLE DESIGN

The highly-stable construction, in combination with the efficient air-flow technology, allows the SmartDry HT to operate at maximum efficiency. Together with the powerful heating system and ventilation components, the dryer can reach outstanding levels of performance and output.

As a standard, all SmartDry HT dryers comes with an innovative Full-face heat-source design.

The construction of this heating zone ensures consistent thermal transfer, avoiding the so-called cold-spots.

The cold-spots occur due to an imbalanced ratio between air-flow profile and the active-flame surface. Therefore, we designed a system that would allow for the rapid thermal transfer, thus ensuring a fast and effective heating across the full width and depth of the dryer drum.



High-quality inner drum in stainless steel



Wide opening glass door for a fast loading process.



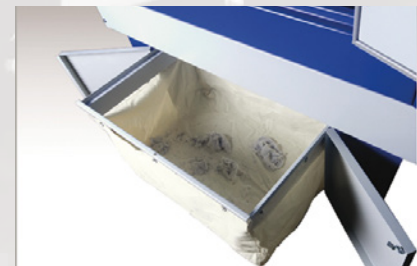
HT 120 Dryer - Pass-through drum

LINT-FILTER SYSTEM

SmartDry HT in standard execution comes equipped with a large lint-filter.

Optionally, customers can include a program-controlled lint-filter cleaning system.

The collected lint can then be fully discharged automatically into a lint-collection bag, or a remote lint-systems container.



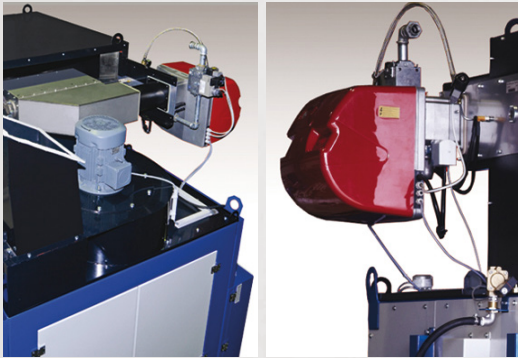
VARIANTS



SmartDry HT 120 Gas

Hand loaded gas dryers, put together as a pass-through system drying station.

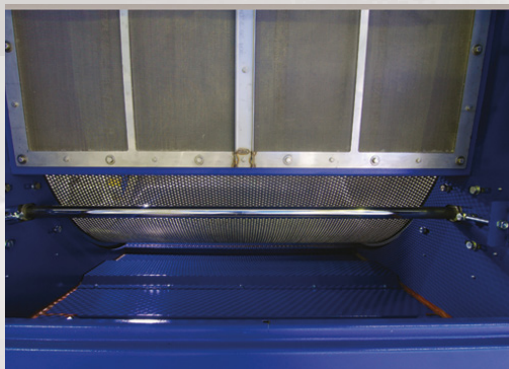
The system displayed is loaded by hand, while the unloading process is fully automatic - the processed linen is then transported to the next station by a central unloading conveyor.



High-Efficiency Burner

The high-efficiency burner technology provides a fast and uniform heat input.

Due to a revolutionary design in dryer technology, which applies a combination of a frequency controlled high-performance radial fan, and a gas heated, air-flow independent surface-burner - the SmartDry machines achieve up to 20% shorter drying times, with lower energy input, compared to conventional equipment.



Steam Heated Dryers

Steam dryers use a specially developed heater battery, with a double insulated casing - like the outer casing and outer doors, the double-wall design ensures energy losses are reduced to a minimum.

Air-Return - the air recirculation recovery system adds the final touch to the energy-saving concept of the SmartDry machines.

CONTROL

The standard execution comes with the latest modern dryer control interface, based on a reliable industrial PLC system. A 5.7" large color touch-panel, offers a full overview of all operational parameters, data and diagnostics. It also provides the possibility to export the process data.

Up to 50 customer specific drying programs can be stored, each with specific temperatures, drum or fan-speeds, adjusted to suit the required process.

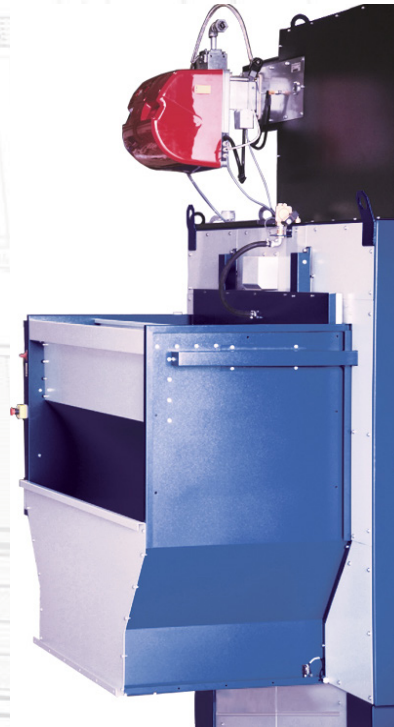


In standard execution:

- PLC Control for automatic operation
- Systems Dryer or Single dryer
- Continuous Electronic temperature control
- Continuous Variable drum speed
- Continuous variable fan-rotational speed
- Large lint-filter
- Reversible inner drum in stainless steel
- Large & wide opening discharge door
- Discharge using air-flow and drum-reversing

Available options:

- Automatic lint-filter with a central removal system
- Electronic over-dry safety system
- Sprinkler system
- Infrared temperature control
- Air-circulation system
- Cool-down system
- Suction loading, or loading by monorail system
- Exhaust heat recovery system



TECHNICAL DATA

| | |
|-----------------|--------------------|
| Type : | HT 120 Gas / Steam |
| Batch Sizes : | 120 kg / 264 lbs |
| Drum Diameter : | 1600 mm / 40.64" |
| Drum Depth : | 1500 mm / 59.05" |
| Drum Volume : | 2500 L / 661 gal |

For more technical details, please contact us.



VEGA systems B.V.
Lauwersmeer 9
5347 JR Oss, The Netherlands
Phone: +31 (0) 412 407090
Fax: +31 (0) 412 407091
info@vegasystems.nl
www.vegasystems-group.com

**VEGA Systems Wash Technology
Germany GmbH**
Sudring 20, 54657
Badem, GERMANY
Phone: +49 (0) 656 396260
info@vegagermany.de
www.vegagermany.com